

PHOTOMETRIC TEST REPORT



FIXTURE DATA

Manufacturer: Clay Paky s.r.l.
Fixture model: AROLLA AQUA HP
Date: 2025-08-28

TABLE OF CONTENTS:

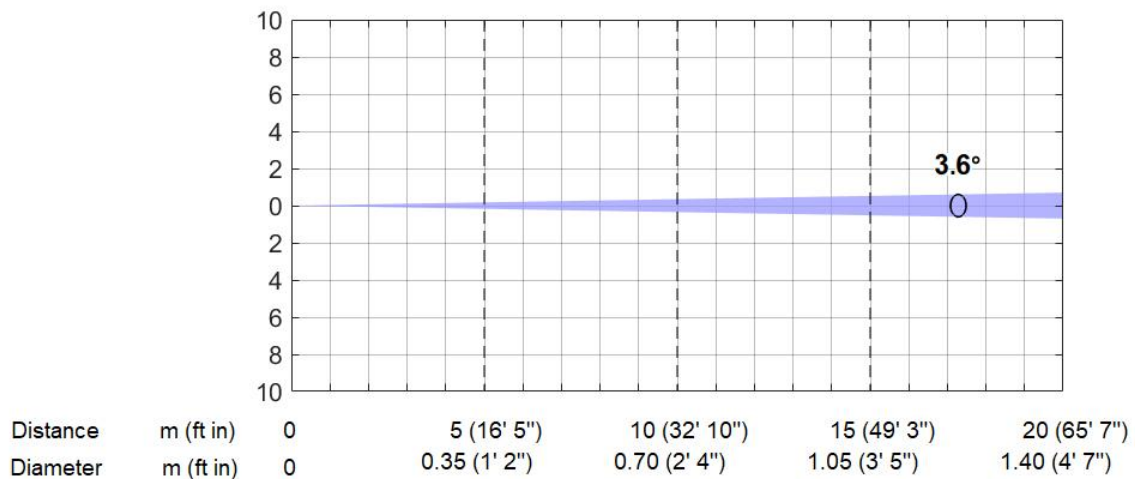
➡ MINIMUM ZOOM: 3.6°	3
➡ MAXIMUM ZOOM: 55°	4
➡ TM-30: WHITE	5
➡ TLCI-2012: WHITE	6

MINIMUM ZOOM: 3.6°

Minimum Zoom (3.6°)

Total Output: 25941 lumens

	Lux (fc)	Lux (fc)	Lux (fc)	Lux (fc)
Constant Fan mode	295084 (27414)	73771 (6853)	32787 (3046)	18443 (1713)
Auto Fan mode	269396 (25027)	67349 (6257)	29933 (2781)	16837 (1564)
Silent Fan mode	255580 (23744)	63895 (5936)	28398 (2638)	15974 (1484)
Theatre Fan mode	252540 (23462)	63135 (5865)	28060 (2607)	15784 (1466)



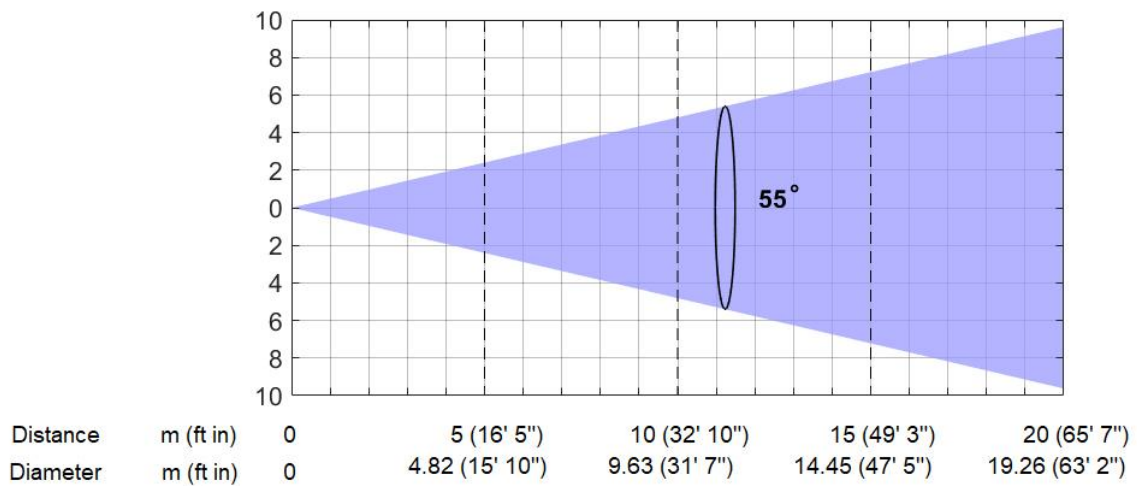
*Lumen values detected with integrating sphere. Measurements taken 15 minutes after the fixture was turned on.

MAXIMUM ZOOM: 55°

Maximum Zoom (55°)

Total Output: 66675 lumens

	Lux (fc)	Lux (fc)	Lux (fc)	Lux (fc)
Constant Fan mode	3952 (367)	988 (92)	439 (41)	247 (23)
Auto Fan mode	3596 (334)	899 (84)	400 (37)	225 (21)
Silent Fan mode	3344 (311)	836 (78)	372 (35)	209 (19)
Theatre Fan mode	3356 (312)	839 (78)	373 (35)	210 (19)



*Lumen values detected with integrating sphere. Measurements taken 15 minutes after the fixture was turned on.

TM-30: WHITE

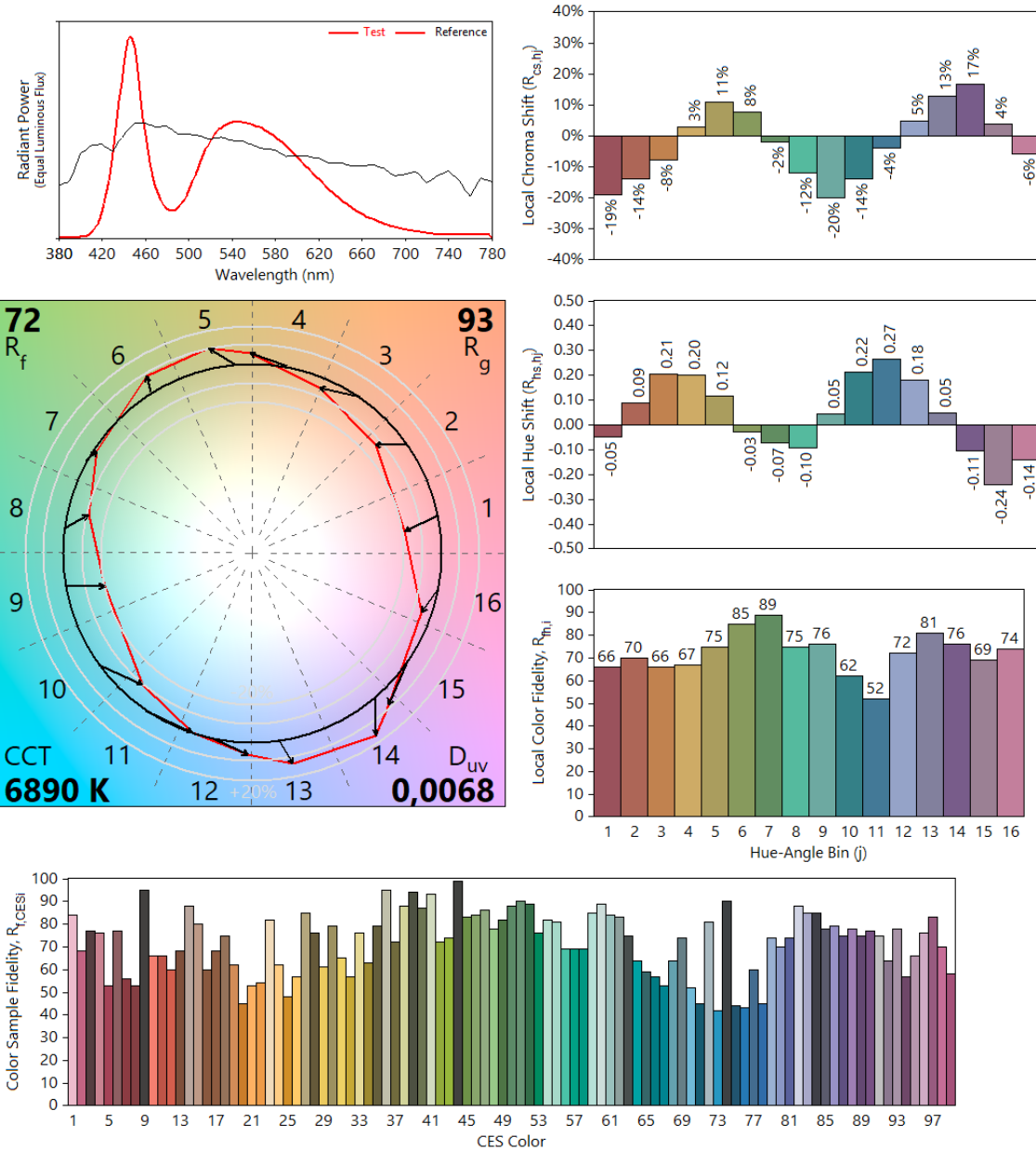
IES TM-30-18 Color Rendition Report

Source: AROLLA AQUA HP

Manufacturer: CLAY PAKY

Date: 18.07.2025

Model: AROLLA AQUA HP



Notes: White

x 0,3057
y 0,3291
u' 0,1930
v' 0,4673

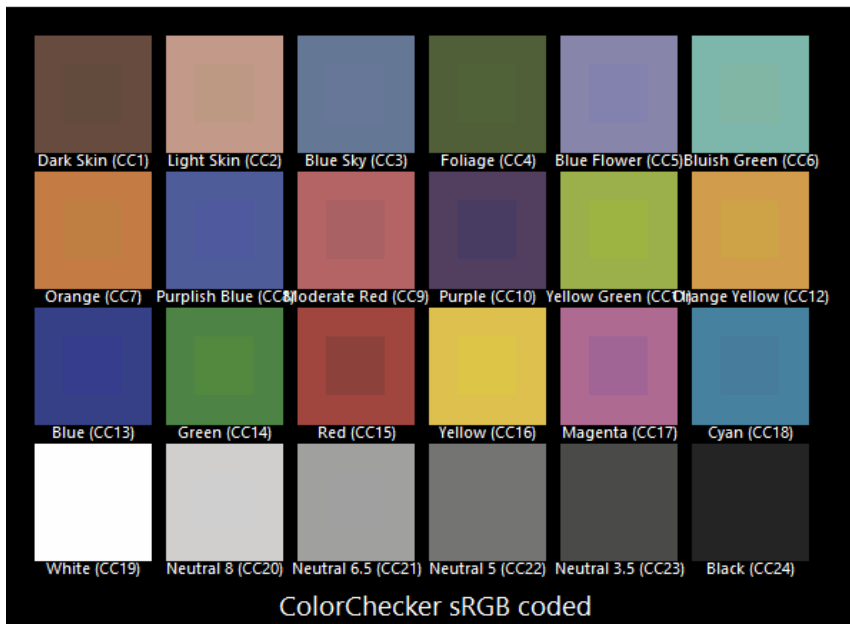
CIE 13.3-1995
(CRI)
R_a 70
R_g -38

Colors are for visual orientation purposes only.

TLCI-2012: WHITE

Direct spectrum input : CCT = D6890 (+0.7)

TLCI-2012 : 49 (D6890)



Sector	Lightness	Chroma	Hue
R	+++++	+++	+
R/Y	0	0	----
Y	-	--	----
Y/G	-	--	0
G	--	-	+++
G/C	0	0	+++++
C	++	0	0
C/B	+++	0	----
B	0	---	----
B/M	++	---	+++
M	+++	-	+++++
M/R	+++++	0	+++++

