

Foundry Power Control Series



GENERAL INFORMATION

F-Drive from ETC brings a state of the art LED luminaire power solution within reach. With configurable constant current and constant voltage versions, along with the option to add dual input emergency support, F-Drive provides ETC's industry leading low voltage power and dimming to both our in-house award winning luminaire range as well as third party fixtures.

APPLICATIONS

- Cruise Ships
- Schools
- Houses of worship
- Conference centers
- Themed Environments
- Retail and hospitality spaces
- Entertainment spaces

FEATURES

- 100-277 VAC Input
- Four individually addressable outputs
- RJ45 output connector (constant current only)
- Two position terminal connectors per output for higher gauge wire (Max 14AWG)
- DMX/RDM control input
- Emergency version features 40-300V (AC or DC) sense input for detection of normal power. Forces all outputs to 100% on loss of sense for emergency egress lighting.

ORDERING INFORMATION

F-Drive W1

MODEL	DESCRIPTION
FDW1CCD	F-Drive W1 with CC Card - 150W 200-700mA Constant Current Driver
FDW1CVD	F-Drive W1 with CV Card - 24V 150W Constant Voltage Driver Card
FDW1FTWD	F-Drive W1 with FTW Card - 150W 450mA Constant Current Driver Card for use with ArcSystem Navis 100 Fade-To-Warm luminaires

F-Drive W1E (Emergency Version)

MODEL	DESCRIPTION
FDW1ECCD	F-Drive W1 Emergency Version with CC Card - 150W 200-700mA Constant Current Driver
FDW1ECVD	F-Drive W1 Emergency Version with CV Card - 24V 150W Constant Voltage Driver Card
FDW1EFTWD	F-Drive W1 Emergency Version with FTW Card - 150W 450mA Constant Current Driver Card for use with ArcSystem Navis 100 Fade-To-Warm luminaires

Note: W1E drivers require a secondary power sense connection for correct operation. See Electrical section below for more information



## Foundry Power Control Series

## SPECIFICATIONS

**REGULATORY AND COMPLIANCE**

- Regulatory and compliance pending

**MECHANICAL**

- Steel enclosure finished in black, fine-textured, scratch-resistant powder coat paint.
- Supplied with two, external mouting strips to allow securement of W1 to wall without removing front plate
- Cable entry/exits points via removable plate on bottom face only for contractor hole punching/drilling

**ELECTRICAL (FRAME ONLY)**

- 100-277 VAC input.
- 50/60 Hz
- 50 W maximum power per channel
- 150 W maximum power
- Input power connection via screw-down terminal block and ground lug

**VARIANTS****150 W FTW (Fade-To-Warm) Card**

- Four individually addressable outputs
- Constant current output
- Max 50 W per circuit (up to card limit)
- 150 W max card limit
- Output provided to both RJ45 and terminal connectors
- Fixed 450 mA drive current for use with ArcSystem Navis 100 FTW luminaire only

**150 W Constant Current Card**

- Four individually addressable outputs
- Constant current output
- Max 50 W per circuit (up to card limit)
- 150 W max card limit
- Output provided to both RJ45 and terminal connectors
- 200-700 mA drive current adjustable via RDM

**150 W Constant Voltage Card**

- Four individually addressable outputs
- Max 50 W per circuit (up to card limit)
- 150 W max card limit
- Output provided to rear terminal connectors only
- 24 V VDC

**FUNCTIONAL**

- DMX input
  - Per-output patching
  - Full RDM compliance

**ENVIRONMENTAL**

- Thermal: 0-40°C; 32-104°F operating temperature
- Humidity: 5-95% non-condensing

Foundry Power Control Series

PHYSICAL

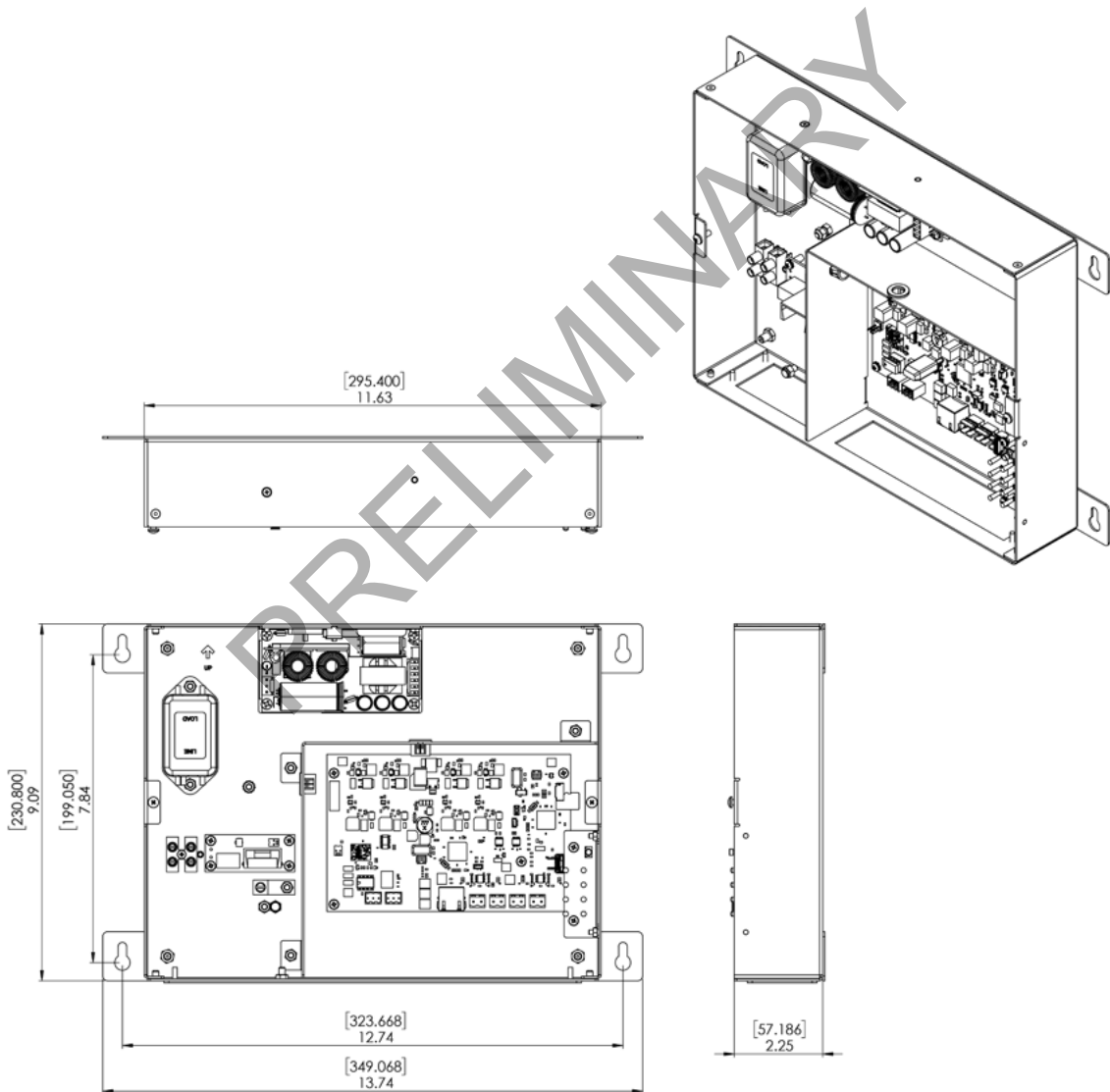
F-Drive W1 Dimensions (excluding mounting bars)

MODEL	HEIGHT		WIDTH		DEPTH	
	in	mm	in	mm	in	mm
FDW1	9.09	230.8	11.63	295.4	2.25	57.19

F-Drive W1 Weights

MODEL	WEIGHT		SHIPPING WEIGHT	
	lb	kg	lb	kg
FDW1	TBD	TBD	TBD	TBD

F-DRIVE W1/W1E



Corporate Headquarters • Middleton, WI USA

Global Offices • London, UK • Rome, IT • Holzkirchen, DE • Paris, FR • Hong Kong • Singapore • New York, NY • Orlando, FL • Los Angeles, CA

Copyright©2020 ETC. All Rights Reserved. All product information and specifications subject to change. Rev PRELIM 03/20

Trademark and patent info: etconnect.com/IP

etconnect.com