

Super LED F7

Led Power 160W – Consumption 180W – PFC 0,96

LED Fresnel SPOTLIGHT CRI greater than 90

White light, either Tungsten or Daylight balanced Correlated Colour Temperature



IP23 rated: "Rain Protected"



LED Lighting, Green Energy

OVERVIEW

The Super LED F7 is an High Output and Rain Protected Fresnel lens spotlight by DE SISTI and includes:

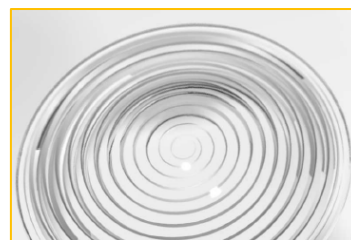
- the De Sisti Internationally Patented optical system for LED FRESNELS and Plano Convex Optics.
- It is available with either a Tungsten (3.200°K) or Daylight (5.600°K) Balanced CCT (Correlated Color Temperature) versions, in both cases with a CRI higher than 90 and both in Manual or Pole operated versions.
- It is using a 160W High CRI - COB LED ARRAY .
- **The Fixture is rated for IP23 and it is ideal for Location Work, it can be use under the RAIN and it has been tested for minus 20° C ambient temperature operation.**
- It is DMX Controlled from 0 to 100% with a super smooth Dimming and a negligible variation of Colour Temperature while controlling the Light intensity.
- The lighting Performances of the Tungsten Balanced CCT are similar from medium to full flood those of a 1,2kW tungsten Fresnels, while the Daylight Balanced CCT is equivalent to a 575W.

The fixture combines the classical SPOT/FLOOD beam control on an equivalent FOCUS RANGE to a conventional lamp fresnel, with an excellent barn door cutting.

It utilizes Standard accessories from the DE SISTI range of equivalent Fresnel Lens size, such as Barndoor, Colour Frame, Cones, scrims.

FEATURES

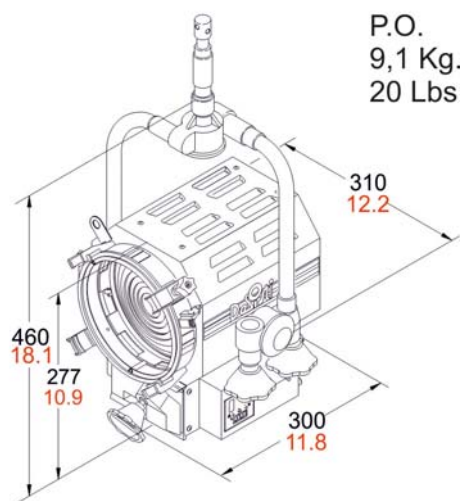
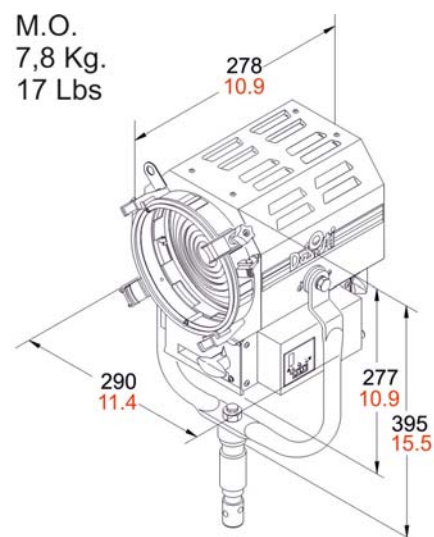
- 175 mm. (7") diameter high quality, shock resistant Borosilicate glass Fresnel lens on spring supports, **with Spiral prism** design and optimum photometric performances
- Rugged and Lightweight Carbon Steel housing with low glare black epoxy powder coating, with internal double walls and reinforces.
- High efficiency Self Stabilizing Active Cooling: Automatic, thermal stabilization of the LED operating temperature is managed by an internal thermal sensor and CPU, variable speed fan and heat sink to maintain the LED Array's constant temperature at a maximum of 65°C. The hydro dynamic bearing fan operates silently with a very low RPM.
- Special Patented Optics for LED Technology.
- Steel cable driven focus mechanism which guides Teflon bushings supported LED ENGINE along 2 rods. This ensures smooth operation during focusing, in any tilting position of the fixture. The Teflon bushings also provide a wiping action, which cleans the steel guide rails during focus. The focusing mechanism can be activated from both front and rear of the fixture and the whole spot to flood action is accomplished with 1 and half turn of the focusing knob.
- The unit is equipped with a hinged lens door with wire-guard, it includes accessory holding brackets. One of the 4 brackets has a locking knob and is spring loaded, it can be locked to either safely hold barndoor, color frame and scrims or to be rotated 90° and locked in an open position for fast accessories changes. A double safety accessory bracket with spring loaded catch is available on request to be assembled opposite to the locking knob.
- The accessories are secure regardless of the orientation of the fixture. Accessories have been designed for one hand installation.



Available with either positive lock manual yokes for comfort and ease of handling, or pole operated yokes which can be used via the lighting pole for Panning and Tilting the lights as well as manually, since the mechanical activators are equipped with clutches.

CHARACTERISTICS & PERFORMANCE DATA

DESCRIPTION	VALUE	
➔ Power to LED	160W DC Current to the LED (no flicker)	
➔ Power Consumption	180W 90-240V 50-60Hz PFC 0,96	
➔ DMX Data link USITT DMX512-A	This product uses a 5-pin XLR for DMX input and output. Use a shielded data cables. Do not overload the daisy chain. Up to a maximum of 32 devices can be used on a single DMX chain.	
➔ DMX Channels	1 at 8bit: Dimmer 2 at 16bit: Dimmer	
➔ LED ARRAY Lifetime	50.000 hours with 70% Lumen Maintenance. The LED ARRAYS are tested and certified up to LM80	
➔ Protection Type	IP 23 (Rain Protection)	
➔ Max. Housing Surface Temperature	70° C	
➔ Weight of Fixture	M.O.	P.O.
	7,8 kg.	9,1 kg.
➔ Weight of Barndoor	4 leaf	8 leaf
	0,63 kg.	0,85 kg.
➔ Size of Barndoor ring	Seat Diameter	Ring Diameter
	192 mm	190 mm (7" ¹ / ₂)
➔ Weight of color frame	0,13 kg.	
➔ Size of scrims & color frame	Seat Diameter	Accessory Diameter
	187 mm	185 mm (7" ¹ / ₄)
➔ Lens diameter	175 mm. Special Spiral Short Focus	



POWER AND DMX DAISY CHAIN, IP Rated



The Super LED FRESNELS permit both POWER and DMX DAISY CHAIN. In fact each Fixture is respectively equipped with:

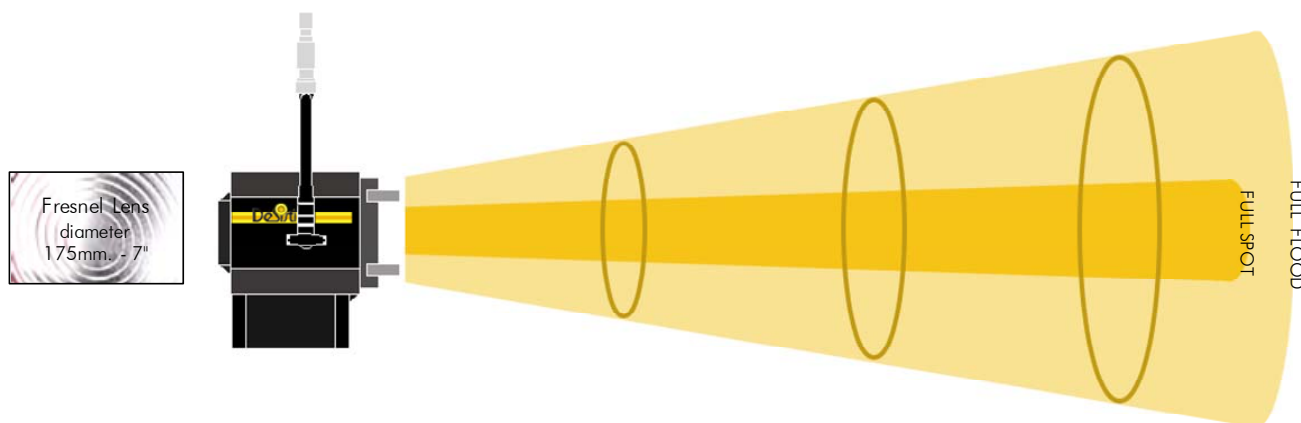
DMX SECTION: XLR5 pin Panel Mount Male & Female (DMX IN & OUT with covers for IP rating).

MAINS SUPPLY with PowerCON TRUE1: The powerCON TRUE1 are connectors with breaking capacity (CBC), i.e. they can be connected or disconnected under load or live, 16A max. The connectors and covers are rated IP65.

PHOTOMETRIC DATA

PHOTOMETRIC DATA Super LED F7 IP23 - 160W to the LED - 180W Power Consumption CRI 91 - PFC 0,96
C.C.T. (Correlated Color Temperature) balanced to match 3.200°K TUNGSTEN LAMPS

Illumination center values at Distances		1.503 lux	541 lux	135 lux
Central Light intensity (Candle Power) 13.527 cd		<i>140 FC</i>	<i>50 FC</i>	<i>13 FC</i>
Light beam diameter with Beam Angle		2,80 mt	4,66 mt	9,33 mt
(50% of center value): 50,0°		<i>9.2 ft</i>	<i>15.3 ft</i>	<i>30.6 ft</i>
Light beam diameter with Field Angle		3,75 mt	6,25 mt	12,50 mt
(10% of center value): 64,0°		<i>12.3 ft</i>	<i>20.5 ft</i>	<i>41.0 ft</i>
FULL FLOOD	DISTANCES	3 mt	5 mt	10 mt
		<i>9.8 ft</i>	<i>16.4 ft</i>	<i>32.8 ft</i>

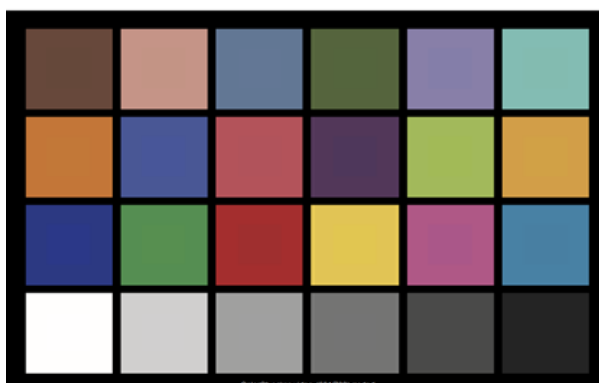


FULL SPOT	DISTANCES	3 mt <i>9.8 ft</i>	5 mt <i>16.4 ft</i>	10 mt <i>32.8 ft</i>
Illumination center values at Distances		5.985 lux	2.155 lux	539 lux
Central Light intensity (Candle Power) 53.865 cd		<i>556 FC</i>	<i>200 FC</i>	<i>50 FC</i>
Light beam diameter with Beam Angle		0,74 mt	1,23 mt	2,46 mt
(50% of center value): 14,0°		<i>2.4 ft</i>	<i>4.0 ft</i>	<i>8.1 ft</i>
Light beam diameter with Field Angle		1,28 mt	2,13 mt	4,25 mt
(10% of center value): 24,0°		<i>4.2 ft</i>	<i>7.0 ft</i>	<i>13.9 ft</i>

$$\text{LUX AT ANY DISTANCE} = \text{Candle Power} : [\text{Distance(in m.)}]^2$$

$$\text{F.C. AT ANY DISTANCE} = \text{Candle Power} : [\text{Distance(in ft)}]^2$$

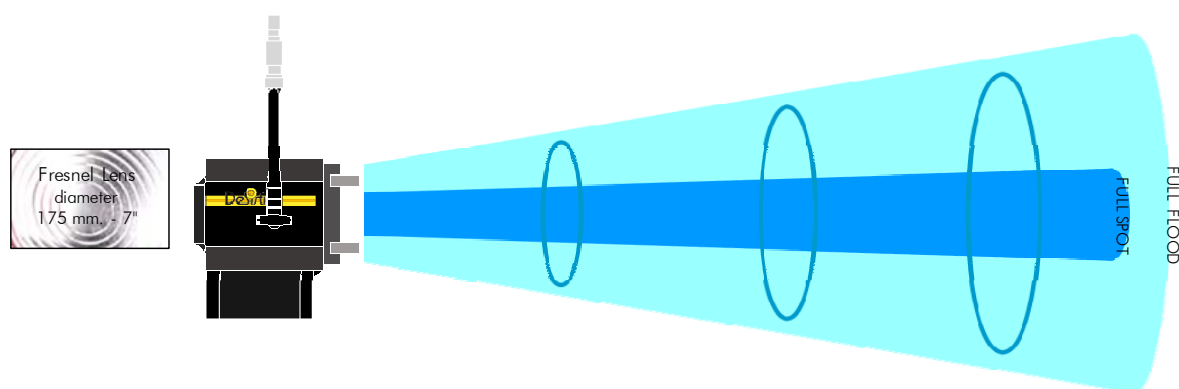
TLCI-2012 : 90 (P3025)



PHOTOMETRIC DATA

PHOTOMETRIC DATA Super LED F7 IP23 - 160W to the LED - 180W Power Consumption CRI 93 - PFC 0,96
C.C.T. (Correlated Color Temperature) balanced to match 5.600°K DAYLIGHT LAMPS

Illumination center values at Distances		1.670 lux	601 lux	150 lux
Central Light intensity (Candle Power)	15.030 cd	<i>155 FC</i>	<i>56 FC</i>	<i>14 FC</i>
Light beam diameter with Beam Angle		2,80 mt	4,66 mt	9,33 mt
(50% of center value):	50,0°	<i>9.2 ft</i>	<i>15.3 ft</i>	<i>30.6 ft</i>
Light beam diameter with Field Angle		3,75 mt	6,25 mt	12,50 mt
(10% of center value):	64,0°	<i>12.3 ft</i>	<i>20.5 ft</i>	<i>41.0 ft</i>
FULL FLOOD	DISTANCES	3 mt	5 mt	10 mt
		<i>9.8 ft</i>	<i>16.4 ft</i>	<i>32.8 ft</i>

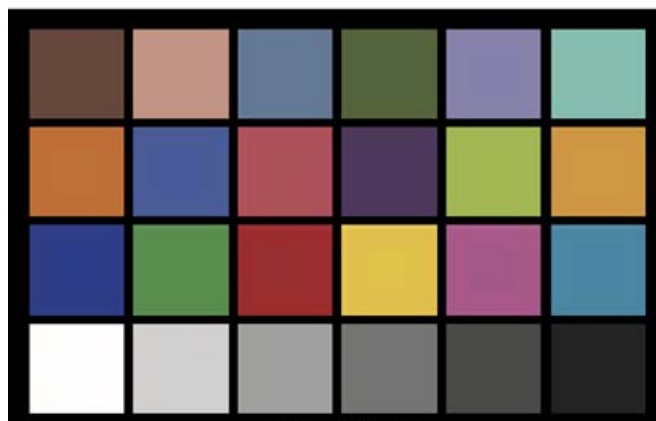


FULL SPOT	DISTANCES	3 mt <i>9.8 ft</i>	5 mt <i>16.4 ft</i>	10 mt <i>32.8 ft</i>
Illumination center values at Distances		6.300 lux	2.268 lux	567 lux
Central Light intensity (Candle Power)	56.700 cd	<i>585 FC</i>	<i>211 FC</i>	<i>53 FC</i>
Light beam diameter with Beam Angle		0,74 mt	1,23 mt	2,46 mt
(50% of center value):	14,0°	<i>2.42 ft</i>	<i>4.03 ft</i>	<i>8.06 ft</i>
Light beam diameter with Field Angle		1,28 mt	2,13 mt	4,25 mt
(10% of center value):	24,0°	<i>4.18 ft</i>	<i>6.97 ft</i>	<i>13.95 ft</i>

$$\text{LUX AT ANY DISTANCE} = \text{Candle Power} : [\text{Distance(in m.)}]^2$$

$$\text{F.C. AT ANY DISTANCE} = \text{Candle Power} : [\text{Distance(in ft)}]^2$$

TLCI-2012 : 90 (D5750)

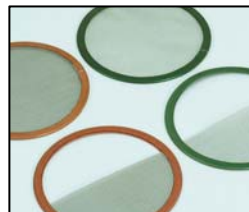


Super LED F7 VERSIONS & MODEL NUMBERS

TUNGSTEN BALANCED CCT (CRI higher than 90)	
"F7T".MO <div> The Model Number for the DIN Spigot Version is "F7T".MO.DIN </div>	Super LED "F7 T" - high power CRI>90 Tungsten CCT, M.O. LED Fresnel Spotlight including: - Mod. "F7T".MO.H IP23 Rain Protected M.O. FIXTURE HEAD with - 175 mm. (7") diameter Spiral Fresnel lens - PowerCON TRUE 1 IN & OUT PANEL MOUNTED CONNECTORS. - XLR 5 Pin DMX IN & OUT PANEL MOUNTED CONNECTORS. - 160W high power CRI>90 LED with Tungsten Balanced Correlated Color Temperature (CCT) - Built In UNIVERSAL Power Supply 90-240V 50/60Hz DMX controlled, PFC 0,96 - Mod. 5403.435 3 mt. det.ble Mains cable w/ PowerCON TRUE 1 mod. NAC3FX-W and other bare end - Mod. LT310.110.40 M.O. yoke with 28,57 mm. spigot (B.S. 1 1/8"), with top end for "C" clamp - Mod. 316.100 four leaf rotating barndoor - Mod. 317.100 colour frame DMX cable is not included, to be ordered separately
"F7T".PO <div> The Model Number for the DIN Spigot Version is "F7T".PO.DIN </div>	Super LED "F7 T" - high power CRI>90 Tungsten CCT, P.O. LED Fresnel Spotlight including: - Mod. "F7T".PO.H IP23 Rain Protected P.O. FIXTURE HEAD with - 175 mm. (7") diameter Spiral Fresnel lens - PowerCON TRUE 1 IN & OUT PANEL MOUNTED CONNECTORS. - XLR 5 Pin DMX IN & OUT PANEL MOUNTED CONNECTORS. - 160W high power CRI>90 LED with Tungsten Balanced Correlated Color Temperature (CCT) - Built In UNIVERSAL Power Supply 90-240V 50/60Hz DMX controlled, PFC 0,96 - Mod. 5403.435 3 mt. det.ble Mains cable w/ PowerCON TRUE 1 mod. NAC3FX-W and other bare end - Mod. 311.110.40 P.O. yoke with 28,57 mm. spigot (B.S. 1 1/8"), with top end for "C" clamp - Mod. 316.100 four leaf rotating barndoor - Mod. 317.100 colour frame DMX cable is not included, to be ordered separately
DAYLIGHT BALANCED CCT (CRI higher than 90)	
"F7D".MO <div> The Model Number for the DIN Spigot Version is "F7D".MO.DIN </div>	Super LED "F7 D" - high power CRI>90 Daylight CCT, M.O. LED Fresnel Spotlight including: - Mod. "F7D".MO.H IP23 Rain Protected M.O. FIXTURE HEAD with - 175 mm. (7") diameter Spiral Fresnel lens - PowerCON TRUE 1 IN & OUT PANEL MOUNTED CONNECTORS. - XLR 5 Pin DMX IN & OUT PANEL MOUNTED CONNECTORS. - 160W high power CRI>90 LED with Daylight Balanced Correlated Color Temperature (CCT) - Built In UNIVERSAL Power Supply 90-240V 50/60Hz DMX controlled, PFC 0,96 - Mod. 5403.435 3 mt. det.ble Mains cable w/ PowerCON TRUE 1 mod. NAC3FX-W and other bare end - Mod. LT310.110.40 M.O. yoke with 28,57 mm. spigot (B.S. 1 1/8"), with top end for "C" clamp - Mod. 316.100 four leaf rotating barndoor - Mod. 317.100 colour frame DMX cable is not included, to be ordered separately
"F7D".PO <div> The Model Number for the DIN Spigot Version is "F7D".PO.DIN </div>	Super LED "F7 D" - high power CRI>90 Daylight CCT, P.O. LED Fresnel Spotlight including: - Mod. "F7D".PO.H IP23 Rain Protected P.O. FIXTURE HEAD with - 175 mm. (7") diameter Spiral Fresnel lens - PowerCON TRUE 1 IN & OUT PANEL MOUNTED CONNECTORS. - XLR 5 Pin DMX IN & OUT PANEL MOUNTED CONNECTORS. - 160W high power CRI>90 LED with Daylight Balanced Correlated Color Temperature (CCT) - Built In UNIVERSAL Power Supply 90-240V 50/60Hz DMX controlled, PFC 0,96 - Mod. 5403.435 3 mt. det.ble Mains cable w/ PowerCON TRUE 1 mod. NAC3FX-W and other bare end - Mod. LT310.110.40 M.O. yoke with 28,57 mm. spigot (B.S. 1 1/8"), with top end for "C" clamp - Mod. 316.100 four leaf rotating barndoor - Mod. 317.100 colour frame DMX cable is not included, to be ordered separately
5402.503	DMX DAISY CHAIN CABLE 3 mt. (10') LONG, including: - 3 mt. (10') cable terminated with XLR 5 pin Connectors (male and female) at the ends, to allow daisy chain of DMX fixtures.

Super LED F7 *OPTIONALS & ACCESSORIES*

<i>MOD.</i>	<i>Super LED "F 7" - OPTIONALS & ACCESSORIES</i>
15.300	DIN SPIGOT 28 mm. to M12 threaded stud with washer and nut for "C" clamp or stand mountig
95.100	28,57 mm. (1-1/8") spigot to M12 threaded stud with washer and nut for "C" clamp or stand mounting
LT310.110.40	Steel tube Manual Operated stirrup with 28,57 mm. spigot (B.S. 1 1/8"), with top end for attachment to "C"clamp.
LT310.300.40	Steel tube Manual Operated stirrup with 28,00 mm. spigot (D.I.N)
LT310.220.40	Steel tube Manual Operated stirrup with M 12 Threaded hole
311.110.40	Pole operated stirrup with 28,57 mm. spigot (B.S. 1 1/8"), with top end for attachment to "C" clamp.
311.300.40	Pole operated stirrup with 28,00 mm. spigot (D.I.N.)
315.310	Stainless Steel wire guard
316.100	Four leaf rotating barndoor
316.200	Eight way rotating barndoor
317.100	Colour Frame
318.100	Cone with two discs (with front aperture diameter: 105 mm. 80 mm. 55 mm.)
319.100	Set of scrims - Stainless steel
319.101	Full single scrim - Stainless steel
319.102	Full double scrim - Stainless steel
319.103	1/2 single scrim - Stainless steel
319.104	1/2 double scrim - Stainless steel
91.210	Aluminum black painted "C" clamp to hang fixtures overhead and for mounting on pipe with diameters up to 52 mm. (2"), with safety pin (no adapters)
93.102	Extruded Black "C" Clamp with M 12 Threaded Stud
93.103	Extruded Black "C" Clamp with M 10 Threaded Stud
20.100	Safety cable 800 mm. long with 4 mm. diameter steel rope and safety catch.
DGP-A1035 CS	Combo steel stand 35
DGP-A9000N	Wheel set with brakes



DE SISTI LED FRESNELS – LIGHTING QUALITY FIRST:

When choosing a FRESNEL you are expecting:

- Appropriate and effective Focusing Range from Spot to Flood
- Single shadows and their consistency within the Flood Field
- Even and wide Flood with appropriate Barn-door capability

This is exactly what you get with the DE SISTI LED FRESNELS.

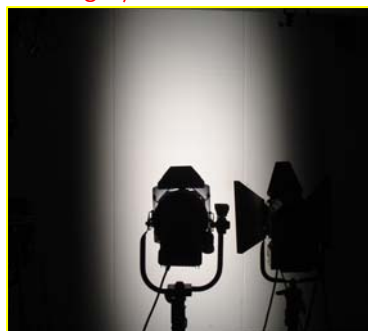
The Internationally Patented Optical system specifically developed by DE SISTI to optimize the use of a LED Engine Technology in combination with a Fresnel Lens (or a Plano Convex) is providing to the DE SISTI LED FRESNELS the exact same lighting projection you would expect from a Standard Fresnel.

The following EXAMPLE SHOWS a COMPARISON between:

LED FIXTURE by "OTHERS" NOT REAL FRESNEL performances



- The Beam in full flood is NARROW (only 45°) and shows an HOT SPOT (large area to go from Beam to Field Angle)



- The Barndoor in a NOT REAL FRESNEL optics does not work properly: the projection is OVAL and the more you barndoor the more you dim the central beam



LED FIXTURE by "DE SISTI" EXACT FRESNEL performances



- The Beam in full flood is LARGE (above 60°), even and flat (No Hot Spots and rapid passage from Beam to Field Angle)



- The Barndoor on the DE SISTI LED FRESNEL has exactly the same functionality obtained with a PROPER FRESNEL optics.