

Super LED F6 VW Vari-White

LED Fresnel SPOTLIGHT

120W Vari-White from 2.800 to 6.600 °K - Enhanced CRI > 94
White light, with Adjustable Correlated Colour Temperature



Vari - White Led Fresnel Range



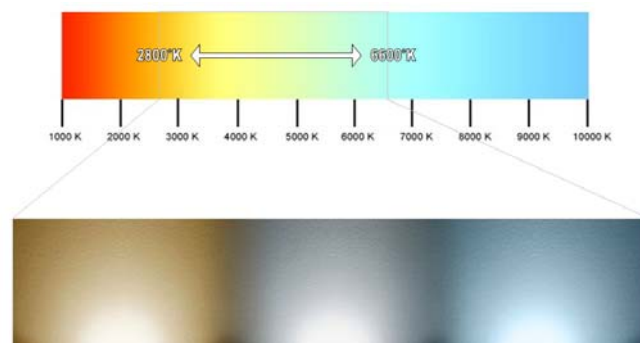
LED Lighting, Green Energy

OVERVIEW

The De Sisti Vari-White LED Fresnel feature:

- CRI Greater than 94 at any CCT within the range
- Variable White CCT technology, with a range from 2,800°K to 6,600°K
- High output & Patented optics with the flexibility of variable colour temperature
- 50,000 Hour LED ARRAY Life
- Universal A/C input voltage from 90-250V
- True smooth 100-0% Dimming via DMX 512
- Silent dimming with little to no colour shift
- Universal power-Con AC input

Variable Correlated Colour Temperature from 2.800 to 6.600°K



The Super LED F6 Vary-White maintains the high efficiency DE SISTI Internationally Patented optical system for LED FRESNEL, while the innovative variable white Phosphors LED ARRAY provides the ability to modulate the Correlated Colour Temperature from a minimum of 2.800°K to a Maximum of 6.600°K with an enhanced CRI (Colour Rendering Index) higher than 94 at any CCT within the range.

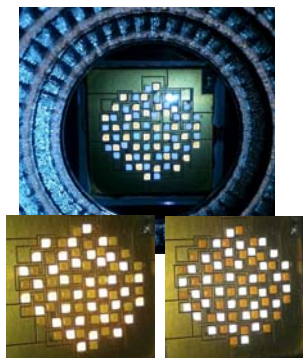
The Lighting Fixture is DMX Controlled for:

- 0 to 100% with a super smooth Dimming
- STEP MODE for CCT Control: Increments of 400°K every 10% of DMX variation
- CONTINUOUS MODE for CCT control.

The fixture combines the classical SPOT/FLOOD beam control on an equivalent FOCUS RANGE to a conventional lamp fresnel, with an excellent barn door cutting.

It utilizes Standard accessories from the DE SISTI range of equivalent Fresnel Lens size, such as Barndoor, Colour Frame, Cones, scrims.

High CRI>94 LED ARRAY based on Phosphors Technology

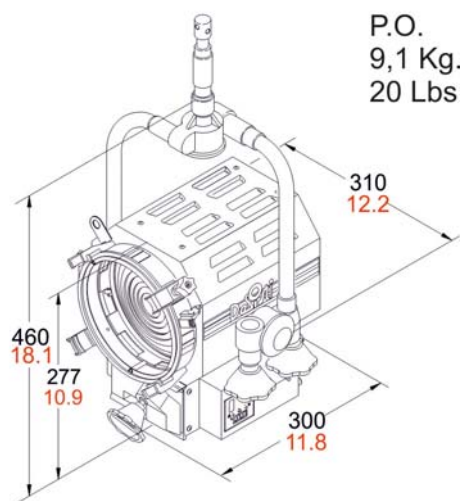
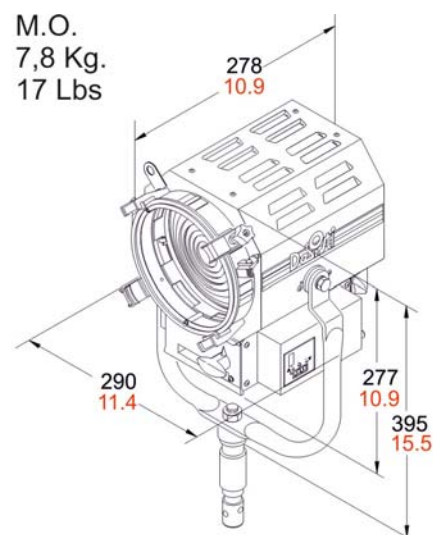


FEATURES

- 150 mm. (6") diameter high quality, shock resistant Borosilicate glass Fresnel lens on spring supports.
- High efficiency Self Stabilizing Active Cooling: Automatic, thermal stabilization of the LED operating temperature is managed by an internal thermal sensor and CPU, variable speed fan and heat sink to maintain the LED Array's constant temperature at a maximum of 65°C. The hydro dynamic bearing fan operates silently with a very low RPM.
- Steel cable driven focus mechanism which guides Teflon bushings supported LED ENGINE along 2 rods. This ensures smooth operation during focusing, in any tilting position of the fixture. The Teflon bushings also provide a wiping action, which cleans the steel guide rails during focus. The focusing mechanism can be activated from both front and rear of the fixture and the whole spot to flood action is accomplished with 1 and half turn of the focusing knob.
- Available with either positive lock manual yokes for comfort and ease of handling, or pole operated yokes which can be used via the lighting pole for Panning and Tilting the lights as well as manually, since the mechanical activators are equipped with clutches. It is possible the conversion between the two types.

CHARACTERISTICS & PERFORMANCE DATA

DESCRIPTION	VALUE	
➔ Power to LED	120W DC Current to the LED (no flicker)	
➔ Power Consumption	Europe	America
	141W @ 230 V 50-60 Hz	150W @ 120 V 50-60 Hz
➔ DMX Data link USITT DMX512-A	<p>This product uses a 5-pin XLR for DMX input and output. Use a shielded data cables.</p> <p>Do not overload the daisy chain. Up to a maximum of 32 devices can be used on a single DMX chain.</p>	
➔ DMX Channels	<p>Total 3 DMX Channels:</p> <p>Base : Dimmer/ Light Intensity Base +1: CCT Control Base +2: Mode of CCT Control (steps or continuous)</p>	
➔ LED ARRAY Lifetime	50.000 hours with 70% Lumen Maintenance.	
➔ Protection Type	IP 22	
➔ Max. Housing Surface Temperature	70° C	
➔ Weight of Fixture	M.O.	P.O.
	7,8 kg.	9,1 kg.
➔ Weight of Barndoor	4 leaf	8 leaf
	0,63 kg.	0,85 kg.
➔ Size of Barndoor ring	Seat Diameter	Ring Diameter
	192 mm	190 mm (7" $\frac{1}{2}$)
➔ Weight of color frame	0,13 kg.	
➔ Size of scrims & color frame	Seat Diameter	Accessory Diameter
	187 mm	185 mm (7" $\frac{1}{4}$)
➔ Lens diameter	150 mm.	



POWER AND DMX DAISY CHAIN



The Super LED FRESNELS permit both POWER and DMX DAISY CHAIN. In fact each Fixture is respectively equipped with:

For DMX:

- 1 XLR5 pin Panel Mount Male & Female (DMX IN & OUT)

For Mains Supply

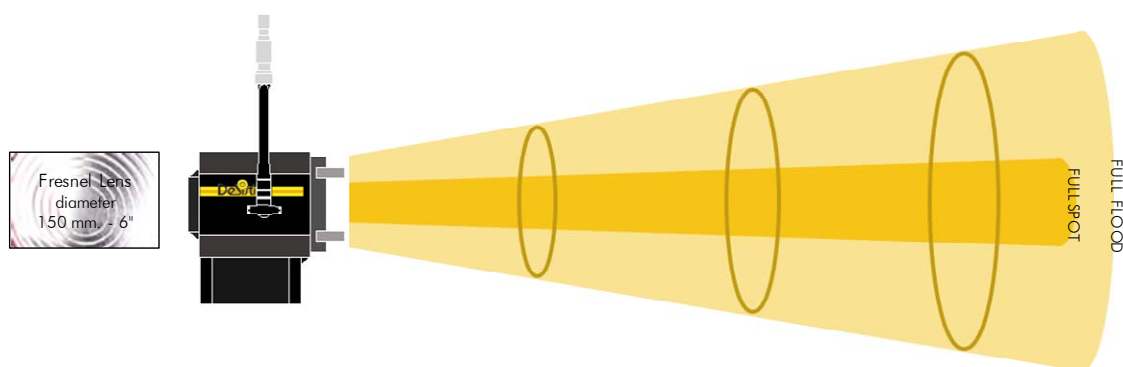
- 1 20A Powercon NAC3MPA BLUE (POWER IN)
- 1 20A Powercon NAC3MPB WHITE (POWER OUT)

PHOTOMETRIC DATA

PHOTOMETRIC DATA SUPER LED F6VW - Vari White - 120W (CRI>94)

CCT tunable from 2.800 to 6.600 °K

@ 2.800°K CCT	Illumination center values at Distances	642 lux	231 lux	58 lux
	Central Light intensity (Candle Power) 5.778 cd	60 FC	21 FC	5 FC
@ 6.600°K CCT	Illumination center values at Distances	831 lux	299 lux	75 lux
	Central Light intensity (Candle Power) 7.479 cd	77 FC	28 FC	7 FC
Light beam diameter with Beam Angle		3,12 mt	5,21 mt	10,41 mt
(50% of center value): 55,0°		10.2 ft	17.1 ft	34.2 ft
Light beam diameter with Field Angle		4,60 mt	7,67 mt	15,35 mt
(10% of center value): 75,0°		15.1 ft	25.2 ft	50.3 ft
FULL FLOOD		3 mt	5 mt	10 mt
DISTANCES		9.8 ft	16.4 ft	32.8 ft



FULL SPOT		DISTANCES	3 mt <i>9.8 ft</i>	5 mt <i>16.4 ft</i>	10 mt <i>32.8 ft</i>
@ 2.800°K CCT	Illumination center values at Distances		5.342 lux	1.923 lux	481 lux
	Central Light intensity (Candle Power)	48.078 cd	<i>496 FC</i>	<i>179 FC</i>	<i>45 FC</i>
@ 6.600°K CCT	Illumination center values at Distances		6.800 lux	2.448 lux	612 lux
	Central Light intensity (Candle Power)	61.200 cd	<i>632 FC</i>	<i>227 FC</i>	<i>57 FC</i>
	Light beam diameter with Beam Angle		0,47 mt	0,79 mt	1,57 mt
	(50% of center value): 9,0°		<i>1.5 ft</i>	<i>2.6 ft</i>	<i>5.2 ft</i>
	Light beam diameter with Field Angle		1,33 mt	2,22 mt	4,43 mt
	(10% of center value): 25,0°		<i>4.4 ft</i>	<i>7.3 ft</i>	<i>14.5 ft</i>

$$\text{LUX AT ANY DISTANCE} = \text{Candle Power} : [\text{Distance(in m.)}]^2$$

$$\text{F.C. AT ANY DISTANCE} = \text{Candle Power} : [\text{Distance(in ft)}]^2$$

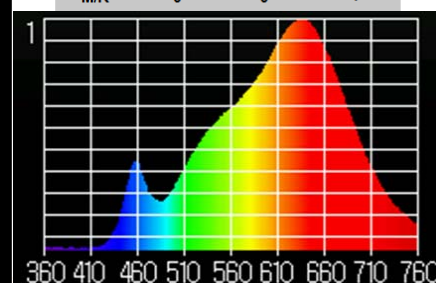
COLORIMETRY & TLCI:

CCT = P2791 (+0.3)
TLCI-2012 : 96 (P2791)

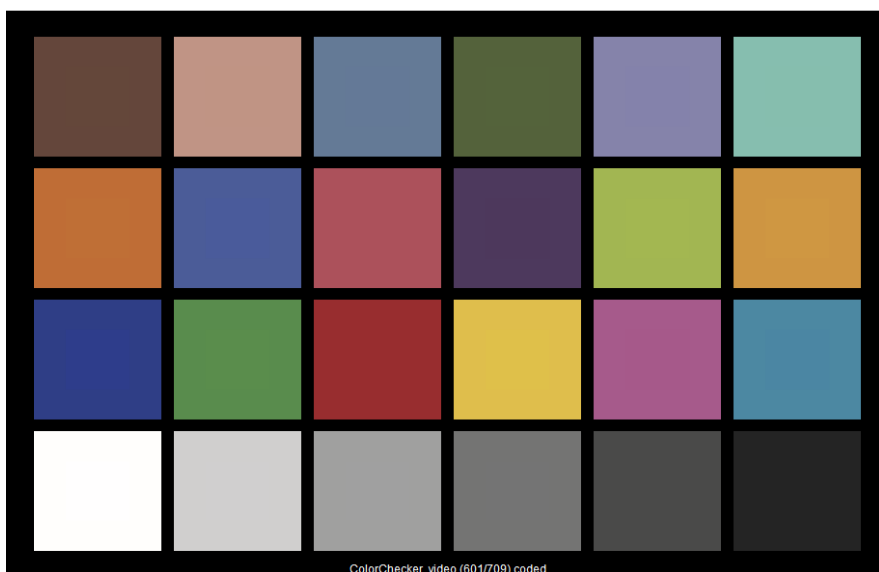


Television Lighting Consistency Index-2012

Sector	Lightness	Chroma	Hue
R	0	0	0
R/Y	0	0	-
Y	0	0	-
Y/G	0	0	0
G	0	0	0
G/C	0	0	0
C	0	0	+
C/B	0	0	-
B	0	-	-
B/M	0	0	+
M	0	0	+
M/R	0	0	+

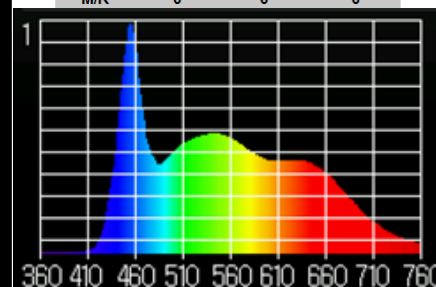


CCT = D6990 (+0.4)
TLCI-2012 : 96 (D6990)



Television Lighting Consistency Index-2012

Sector	Lightness	Chroma	Hue
R	0	0	0
R/Y	0	0	-
Y	0	0	-
Y/G	0	0	0
G	0	0	0
G/C	0	0	0
C	0	0	-
C/B	0	0	--
B	0	-	-
B/M	0	0	0
M	0	0	0
M/R	0	0	0



Super LED F6 VW Vari-White *VERSIONS & MODEL NUMBERS*

MOD.	DESCRIPTION
SUPER LED F6 VARI WHITE CCT (CRI higher than 94)	
"F6VW".MO <div> The Model Number for the DIN Spigot Version is "F6VW".MO.DIN </div>	Super LED "F6VW" - 120W Vari White from 2800 to 6600 °K High Output - Enhanced CRI > 94 , M.O. LED Fresnel Spotlight including: - Mod. "F6VW".MO.H M.O. FIXTURE HEAD with - 150 mm. (6") diameter Fresnel lens - POWERCON IN & OUT PANEL MOUNTED CONNECTORS. - XLR 5 Pin DMX IN & OUT PANEL MOUNTED CONNECTORS. - 120W high output CRI>94 LED with Variable Correlated Color Temperature (CCT) from 2.800°K till 6.600 °K - Built In Universal Power Supply 90-240V 50/60Hz DMX controlled. - Mod. 5403.135 3 mt. detachable Blue POWERCON power cable with bare ends - Mod. LT310.110.40 M.O. yoke with 28,57 mm. spigot (B.S. 1 1/8"), with top end for "C" clamp - Mod. 316.100 four leaf rotating barndoor - Mod. 317.100 colour frame DMX cable is not included, to be ordered separately
"F6VW".PO <div> The Model Number for the DIN Spigot Version is "F6VW".PO.DIN </div>	Super LED "F6VW" - 120W Vari White from 2800 to 6600 °K High Output - Enhanced CRI > 94 , P.O. LED Fresnel Spotlight including: - Mod. "F6VW".PO.H P.O. FIXTURE HEAD with - 150 mm. (6") diameter Fresnel lens - POWERCON IN & OUT PANEL MOUNTED CONNECTORS. - XLR 5 Pin DMX IN & OUT PANEL MOUNTED CONNECTORS. - 120W high output CRI>94 LED with Variable Correlated Color Temperature (CCT) from 2.800°K till 6.600 °K - Built In Universal Power Supply 90-240V 50/60Hz DMX controlled. - Mod. 5403.135 3 mt. detachable Blue POWERCON power cable with bare ends - Mod. 311.110.40 P.O. yoke with 28,57 mm. spigot (B.S. 1 1/8"), with top end for "C" clamp - Mod. 316.100 four leaf rotating barndoor - Mod. 317.100 colour frame DMX cable is not included, to be ordered separately

Super LED F6 VW Vari-White *OPTIONALS & ACCESSORIES*

<i>MOD.</i>	<i>Super LED F6 VW - Enhanced CRI - OPTIONALS & ACCESSORIES</i>
15.300	DIN SPIGOT 28 mm. to M12 threaded stud with washer and nut for "C" clamp or stand mountig
95.100	28,57 mm. (1-1/8") spigot to M12 threaded stud with washer and nut for "C" clamp or stand mounting
LT310.110.40	Steel tube Manual Operated stirrup with 28,57 mm. spigot (B.S. 1 1/8"), with top end for attachment to "C" clamp.
LT310.300.40	Steel tube Manual Operated stirrup with 28,00 mm. spigot (D.I.N)
LT310.220.40	Steel tube Manual Operated stirrup with M 12 Threaded hole
311.110.40	Pole operated stirrup with 28,57 mm. spigot (B.S. 1 1/8"), with top end for attachment to "C" clamp.
311.300.40	Pole operated stirrup with 28,00 mm. spigot (D.I.N.)
315.310	Stainless Steel wire guard
316.100	Four leaf rotating barndoor
316.200	Eight way rotating barndoor
317.100	Colour Frame
318.100	Cone with two discs (with front aperture diameter: 105 mm. 80 mm. 55 mm.)
319.100	Set of scrims - Stainless steel
319.101	Full single scrim - Stainless steel
319.102	Full double scrim - Stainless steel
319.103	1/2 single scrim - Stainless steel
319.104	1/2 double scrim - Stainless steel
91.210	Aluminum black painted "C" clamp to hang fixtures overhead and for mounting on pipe with diameters up to 52 mm. (2"), with safety pin (no adapters)
93.102	Extruded Black "C" Clamp with M 12 Threaded Stud
93.103	Extruded Black "C" Clamp with M 10 Threaded Stud
20.100	Safety cable 800 mm. long with 4 mm. diameter steel rope and safety catch.
DGP-A1035 CS	Combo steel stand 35
DGP-A9000N	Wheel set with brakes



DE SISTI LED FRESNELS – LIGHTING QUALITY FIRST:

When choosing a FRESNEL you are expecting:

- Appropriate and effective Focusing Range from Spot to Flood
- Single shadows and their consistency within the Flood Field
- Even and wide Flood with appropriate Barn-door capability

This is exactly what you get with the DE SISTI LED FRESNELS.

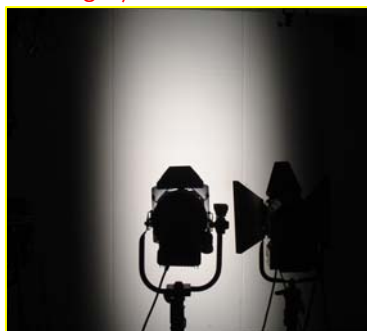
The Internationally Patented Optical system specifically developed by DE SISTI to optimize the use of a LED Engine Technology in combination with a Fresnel Lens (or a Plano Convex) is providing to the DE SISTI LED FRESNELS the exact same lighting projection you would expect from a Standard Fresnel.

The following EXAMPLE SHOWS a COMPARISON between:

LED FIXTURE by "OTHERS" NOT REAL FRESNEL performances



- The Beam in full flood is NARROW (only 45°) and shows an HOT SPOT (large area to go from Beam to Field Angle)



- The Barndoor in a NOT REAL FRESNEL optics does not work properly: the projection is OVAL and the more you barndoor the more you dim the central beam



LED FIXTURE by "DE SISTI" EXACT FRESNEL performances



- The Beam in full flood is LARGE (above 60°), even and flat (No Hot Spots and rapid passage from Beam to Field Angle)



- The Barndoor on the DE SISTI LED FRESNEL has exactly the same functionality obtained with a PROPER FRESNEL optics.